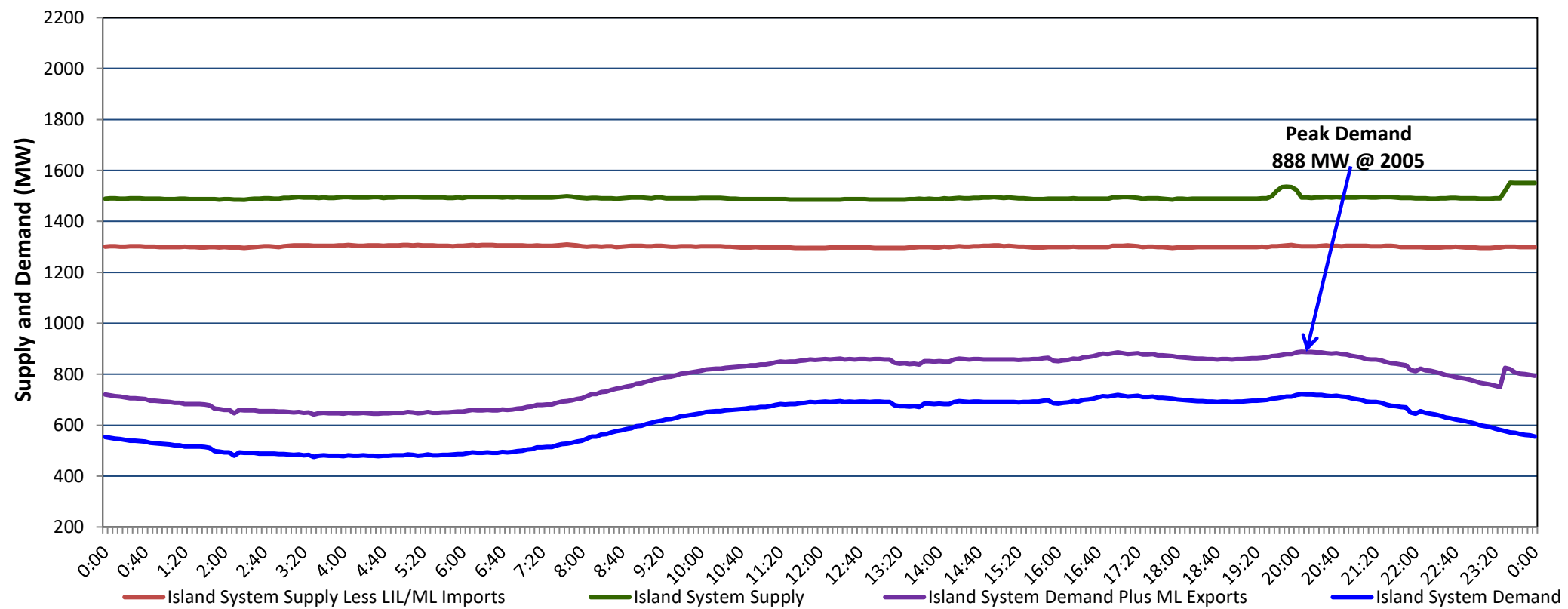


**Newfoundland Labrador Hydro (NLH)  
Supply and Demand Status Report Filed Monday, September 11, 2023**

**Section 1  
Island Interconnected System Supply, Demand & Exports  
Actual 24 Hour System Performance For Sunday, September 10, 2023**



**Supply Notes For September 10, 2023**

- A As of 0701 hours, March 06, 2023, Upper Salmon Unit unavailable (84 MW).
- B As of 0800 hours, May 21, 2023, Holyrood Unit 2 unavailable due to planned outage (170 MW).
- C As of 0903 hours, June 29, 2023, St. Anthony Diesel Plant available at 8.85 MW (9.7 MW).
- D As of 0800 hours, July 09, 2023, Holyrood Unit 1 unavailable due to planned outage (170 MW).
- E As of 2059 hours, July 13, 2023, Stephenville Gas Turbine unavailable (50 MW).
- F As of 2238 hours, July 25, 2023, Bay d'Espoir Unit 6 unavailable (76.5 MW).
- G As of 0933 hours, August 15, 2023, Holyrood Unit 3 unavailable due to planned outage (150 MW).

**Section 2  
Island Interconnected Supply and Demand**

Mon, Sep 11, 2023	Island System Outlook <sup>3</sup>	Seven-Day Forecast	Temperature (°C)		Island System Daily Peak Demand (MW)	
			Morning	Evening	Forecast	Adjusted <sup>7</sup>
Available Island System Supply: <sup>5</sup>	1,455 MW	Monday, September 11, 2023	14	13	920	920
NLH Island Generation: <sup>4,8</sup>	990 MW	Tuesday, September 12, 2023	13	13	705	705
NLH Island Power Purchases: <sup>6</sup>	80 MW	Wednesday, September 13, 2023	14	14	735	735
Other Island Generation:	195 MW	Thursday, September 14, 2023	14	15	745	745
ML/LIL Imports:	190 MW	Friday, September 15, 2023	17	19	765	765
Current St. John's Temperature & Windchill:	13 °C	Saturday, September 16, 2023	16	12	720	720
7-Day Island Peak Demand Forecast:	920 MW	Sunday, September 17, 2023	12	12	770	770

**Supply Notes For September 11, 2023**

- Notes:
1. Generation outages for running and corrective maintenance are included. These are not unusual for power system operations. They generally do not impact customer supply. The power system operators schedule outages to system equipment whenever possible to coincide with periods when customer demands are low and sufficient supply reserves are available. However, from time to time equipment outages are necessary and reserves may be impacted.
  2. Due to the Island system having no synchronous connections to the larger North American grid, when there is a sudden loss of large generating units there may be a requirement for some customer's load to be interrupted for short periods to bring generation output equal to customer demand. This automatic action of power system protection, referred to as under frequency load shedding (UFLS), is necessary to ensure the integrity and reliability of system equipment. Under frequency events have typically occurred 5 to 8 times per year on the Island Interconnected System and the resultant customer load interruptions are generally less than 30 minutes. With the activation of the Maritime Link frequency controller during the winter of 2018, UFLS events have occurred less frequently.
  3. As of 0800 Hours.
  4. Gross output including station service at Holyrood (24.5 MW) and improved NLH hydraulic output due to water levels (35 MW).
  5. Gross output from all Island sources (including Note 4).
  6. NLH Island Power Purchases include: CBPP Co-Gen, Nalcor Exploits, Rattle Brook, Star Lake, Wind Generation and capacity assistance (when applicable).
  7. Adjusted for curtailable load, market activities and the impact of voltage reduction when applicable.
  8. Due to limitations inherent in the design of combustion turbines, the output of combustion turbines may be reduced in the event that ambient temperatures exceed the threshold

**Section 3  
Island Peak Demand Information  
Previous Day Actual Peak and Current Day Forecast Peak**

Sun, Sep 10, 2023	Actual Island Peak Demand <sup>9</sup>	20:05	888 MW
Mon, Sep 11, 2023	Forecast Island Peak Demand		920 MW

Notes: 9. Island Demand / LIL / ML Exports (where applicable) is supplied by NLH generation and purchases, plus generation owned and operated by Newfoundland Power and Corner Brook Pulp & Paper (Deer Lake Power, DLP).